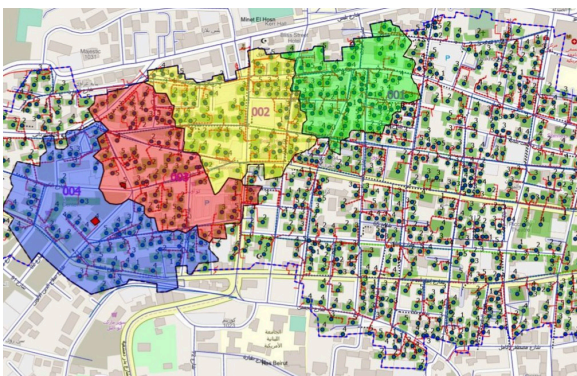


# Solution for Telecom **Network Management and Design**

## Main **Features**

- Telecom Management
- Telecom Designer and Optimization
- Simple & Complex Models
- Connection Manager & Signal Tracing
- Structure Butterfly & Span Cross-section
- Bill of Quantities & Bill of Material
- Connectivity Toolset



## Telco<sup>+</sup> **Desktop Overview**

Developed based on ArcGIS Enterprise and ArcGIS Pro  
Fully utilizing the ArcGIS Platform and ArcGIS Apps  
Combines the power of Enterprise GIS and machine learning to generate industry best practice design

Telco+ is a powerful toolset utilizing ESRI's ArcGIS platform that is used by telecom and utilities companies that support them in mapping, analysis and design of their fiber-based and/or coax-based network. Through Telco+, users can manage and model every connection, splice, man hole, hand hole, and panel to the port level of the network, utilizing the power of ESRI's enterprise GIS.

# Telco<sup>+</sup>

by Kapcite

Telco<sup>+</sup> creates an intelligent end-to-end physical and logical network models that combine network maps, equipment specifications, device configurations, construction ready documents, and more. This model can be leveraged across multiple workflows and secure web applications to enable increased productivity for multiple teams including field operations, billing, accounting, customer service, and sales.



Accurately **See**  
Your Network



Efficiently **Design**  
it

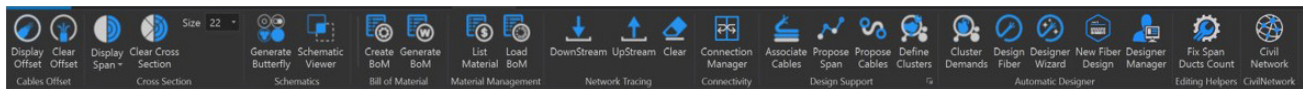


Smartly **Manage**  
Network Resources



Easily **Integrate**  
with other platforms

## Telco<sup>+</sup> Desktop by Kapcite



1- Cables Offset



5- Material Management



9- Automatic Designer



2- Cross-Section



6- Network Tracing



10- Editing Helpers



3- Schematics



7- Connectivity



11- Civil Network



4- Bill of Material



8- Design Support

### Brought to you by K&A

Telco<sup>+</sup> is a geospatial map viewer by Kapcite, Khatib & Alami (K&A) Platform for Smart Solutions.

Kapcite is a pioneer of efficient technology with three decades of experience, tapping into the potential and effectiveness of Geographic Information Systems across governments, businesses, clients and users.



Telco<sup>+</sup>

Configuration & Deployment  
Data Development Customization  
and additional features  
Systems Integration



**Kapcite**

www.kapcite.com